



sala ayutthaya

Boutique hotel in the Heart of Ayutthaya

HISTORY

Known as the ancient capital of Siam, Thailand's former capital Ayutthaya is renowned for its temple ruins and historical sites. Lying at the confluence of three rivers north of Bangkok is Ayutthaya Historical Park, a UNESCO World Heritage Site located in the centre of the city.

HOTEL

Located along the banks of Chao Phraya River, sala ayutthaya is a charming boutique offering stylish accommodations and unique experiences with picturesque views of the famous Wat Phutthaisawan in all river front views, eatery and bar and rooftop lounge & bar.

LOCATION

84km from Suvarnabhumi International Airport

55km from Don Mueang Airport, Bangkok

DINING & FACILITIES

One Swimming Pool

sala ayutthaya eatery and bar

rooftop lounge & bar

An Art Gallery

GUEST SERVICES

Airport Transfer Services

Excursions & Tours

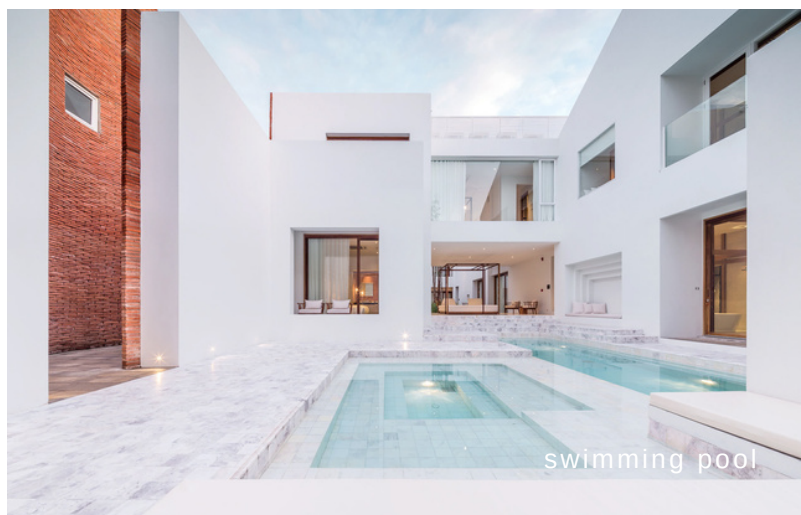
In-room Dining

Meetings & Intimate Events

Weddings & Solemnisation



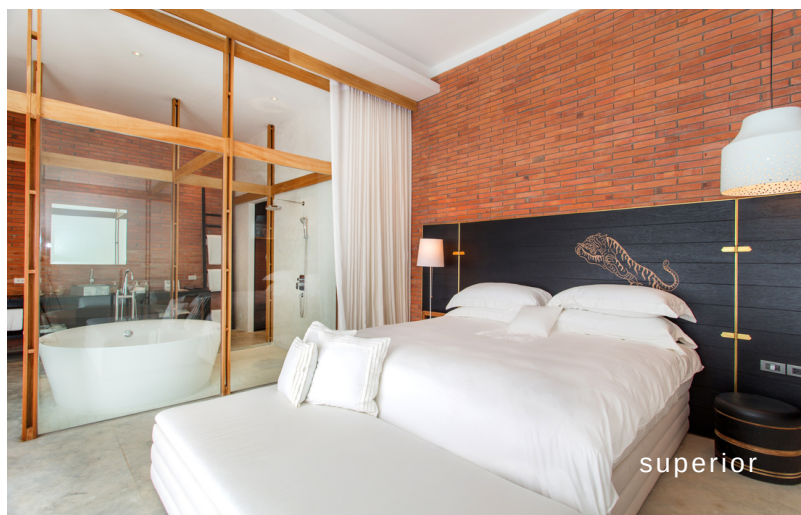
exterior - river view



swimming pool



deluxe river view



superior



GUESTROOM FACILITIES

- The hotel has a total of 27 rooms, ranging from 40 to 114 square meters
- All rooms have bathtub and rain shower
- Complimentary Wi-Fi broadband internet around the hotel
- Complimentary coffee from in-room Nespresso Machine and tea, replenished once daily
- Refrigerator and mini-bar
- 43" SMART flat screen television, with satellite/cable connection
- Marshall sound system with smartphone connectivity
- In-room electronic safe
- Laundry and dry-cleaning service

***All measurements are in SQM*

Room Type	Number of Rooms	Capacity Per Room	Bedroom	Bathroom	Living Room	Total
superior <i>1st, 2nd floor</i>	15	3 Adult 2 Adult + 1 Child	32.5	7.5	N/A	40 - 46
deluxe river view <i>2nd floor</i>	4	3 Adult 2 Adult + 1 Child	32.5	7.5	N/A	40 - 50
deluxe river view terrace <i>1st, 2nd floor</i>	6	3 Adult 2 Adult + 1 Child	32.5	7.5	N/A	40 - 60
one bedroom pool suite <i>1st floor</i>	1	3 Adult 2 Adult + 1 Child	27	7.5	N/A	72
two bedroom duplex river view suite <i>1st & 2nd Floor</i>	1	5 Adult 4 Adult + 1 Child	50	7.7	N/A	114

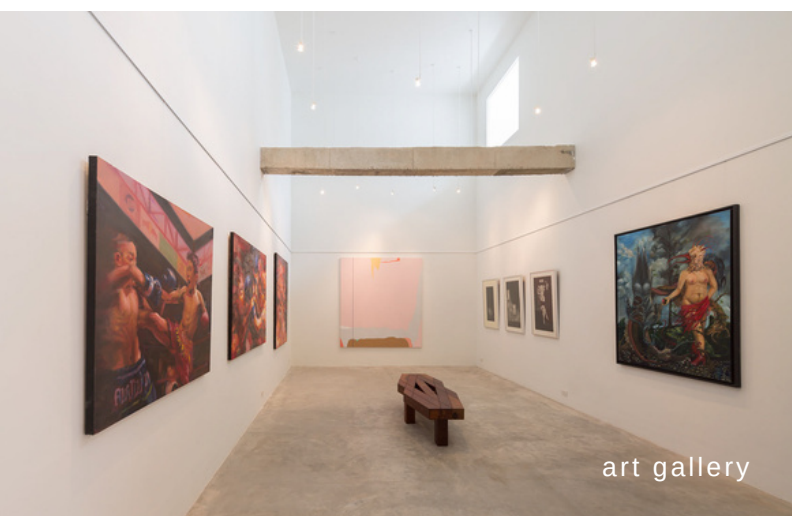
DINING

sala ayutthaya eatery and bar

With indoor and alfresco seating, the riverfront restaurant overlooks the legendary Chao Phraya River and Wat Phutthaisawan. The menu features a selection of traditional Thai dishes and international favourites.

rooftop lounge & bar

With its rustic-chic design, loft style interiors and elegant outdoor terrace, the lounge & bar is the perfect place to unwind whilst soaking in the best views of the heritage location, including views of Wat Phutthaisawan.



EXPERIENCES

Iconic Meetings

Known for its picturesque backdrop, sala ayutthaya is the ideal venue for business dinners team building and intimate events. Featuring state-of-the-art facilities and catering services, choose from three unique spaces including an art gallery

Suitable for events up to 80 persons

Exceptional Weddings

An intimate wedding venue personally crafted, made to measure and stitched to your desires.

Engagement Packages / Ceremonies:

Thai pouring, monk, christian

Wedding Packages:

Choice between western or Thai set menu

