

sala  
ayutthaya



+66-35-242-588



stay@salaayutthaya.com



www.salaayutthaya.com

# sala ayutthaya

Boutique Hotel in the Heart of Ayutthaya

## DESTINATION

Known as the ancient capital of Siam, Thailand's former capital Ayutthaya is renowned for its temple ruins and historical sites. Situated at the confluence of three rivers, north of Bangkok, Ayutthaya Historical Park is a UNESCO World Heritage Site located in the centre of the city.

## HOTEL

A charming boutique hotel nestled in the heart of Ayutthaya, sala ayutthaya offers stylish accommodations and unique experiences. Most rooms feature stunning views of the iconic Wat Phutthaisawan, allowing guests to immerse themselves in the historical landscape.

## LOCATION

84 KM to Suvarnabhumi International Airport  
55 KM to Don Mueang Airport, Bangkok

## GUEST SERVICES

Airport Transfer Services  
Excursions & Tours  
In-room Dining  
Meetings & Intimate Events  
Weddings & Solemnisation

## DINING & FACILITIES

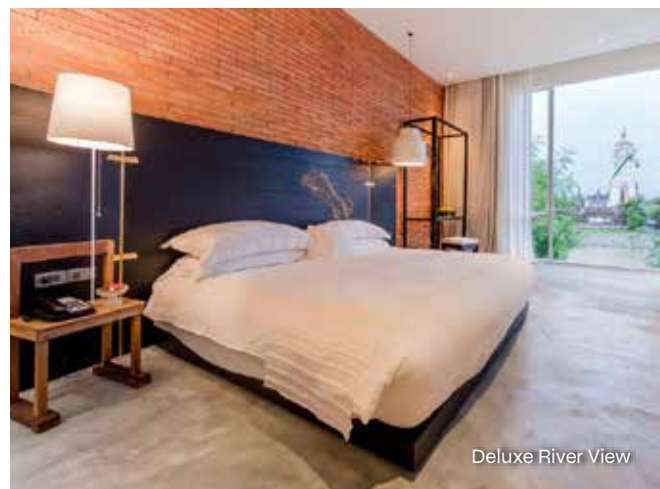
One Swimming Pool  
Eatery and Bar  
Rooftop Lounge & Bar  
An Art Gallery



Exterior - River View



Swimming Pool



Deluxe River View



One Bedroom Pool Suite



One Bedroom Pool Suite

## GUEST ROOM HIGHLIGHTS

- The hotel has a total of 27 rooms, ranging from 40 to 114 square meters
- All rooms have bathtub and rain shower
- Complimentary Wi-Fi broadband internet
- Coffee fMachine and Tea-making facilities
- Refrigerator and mini-bar
- 43" SMART flat screen television
- Marshall sound system with smartphone connectivity
- In-room electronic safe
- Laundry and dry-cleaning service

\*\*\*\*All measurements are in SQM

Room Type	Capacity Per Room	Number of Rooms	Bedroom	Bathroom	Total
Superior 1st, 2nd Floor	3 Adult 2 Adult + 1 Child	15	32.5	7.5	40 - 46
Deluxe River View 2nd Floor	3 Adult 2 Adult + 1 Child	4	32.5	7.5	40 - 50
Deluxe River View Terrace 1st, 2nd Floor	3 Adult 2 Adult + 1 Child	6	32.5	7.5	40 - 60
One Bedroom Pool Suite 1st Floor	3 Adult 2 Adult + 1 Child	1	27	7.5	72
Two Bedroom Duplex River View Suite 1st & 2nd Floor	5 Adult 4 Adult + 1 Child	1	50	7.7	114



Al Fresco - Eatery and Bar



Rooftop Lounge & Bar



Art Gallery



Weddings

## DINING

### Eatery and Bar

With both indoor and alfresco seating, the riverfront restaurant offers stunning views of the legendary Chao Phraya River and Wat Phutthaisawan. The menu features a selection of traditional Thai dishes and international favourites.

### Rooftop Lounge & Bar

With its rustic-chic design, loft style interiors and elegant outdoor terrace, the Lounge & Bar is the perfect place to unwind whilst soaking in the best views of the heritage location, including views of Wat Phutthaisawan.

## EXPERIENCES

### Iconic Meetings

Known for its picturesque backdrop, sala ayutthaya is the ideal venue for business dinners, team-building activities, and intimate events. Featuring state-of-the-art facilities and catering services, the venue offers three unique spaces, including an art gallery. It is suitable for events of up to 80 guests, with hotel buyouts also available.

### Exceptional Weddings

Our intimate wedding venue is personally crafted to match your desires, offering a bespoke experience tailored just for you. We provide a range of engagement packages and ceremonies, including traditional Thai pouring, monk blessings, and Christian ceremonies. For weddings, you can choose between a Western or Thai set menu, ensuring that every detail is perfectly suited to your preferences.



**sala**  
ayutthaya

sala ayutthaya

9/2 Moo 4, U-Thong Road, Pratu Chai Phra Nakhon Si Ayutthaya, 13000 Thailand  
+66-35-242-588 | [stay@salaayutthaya.com](mailto:stay@salaayutthaya.com)  
[www.salaayutthaya.com](http://www.salaayutthaya.com)